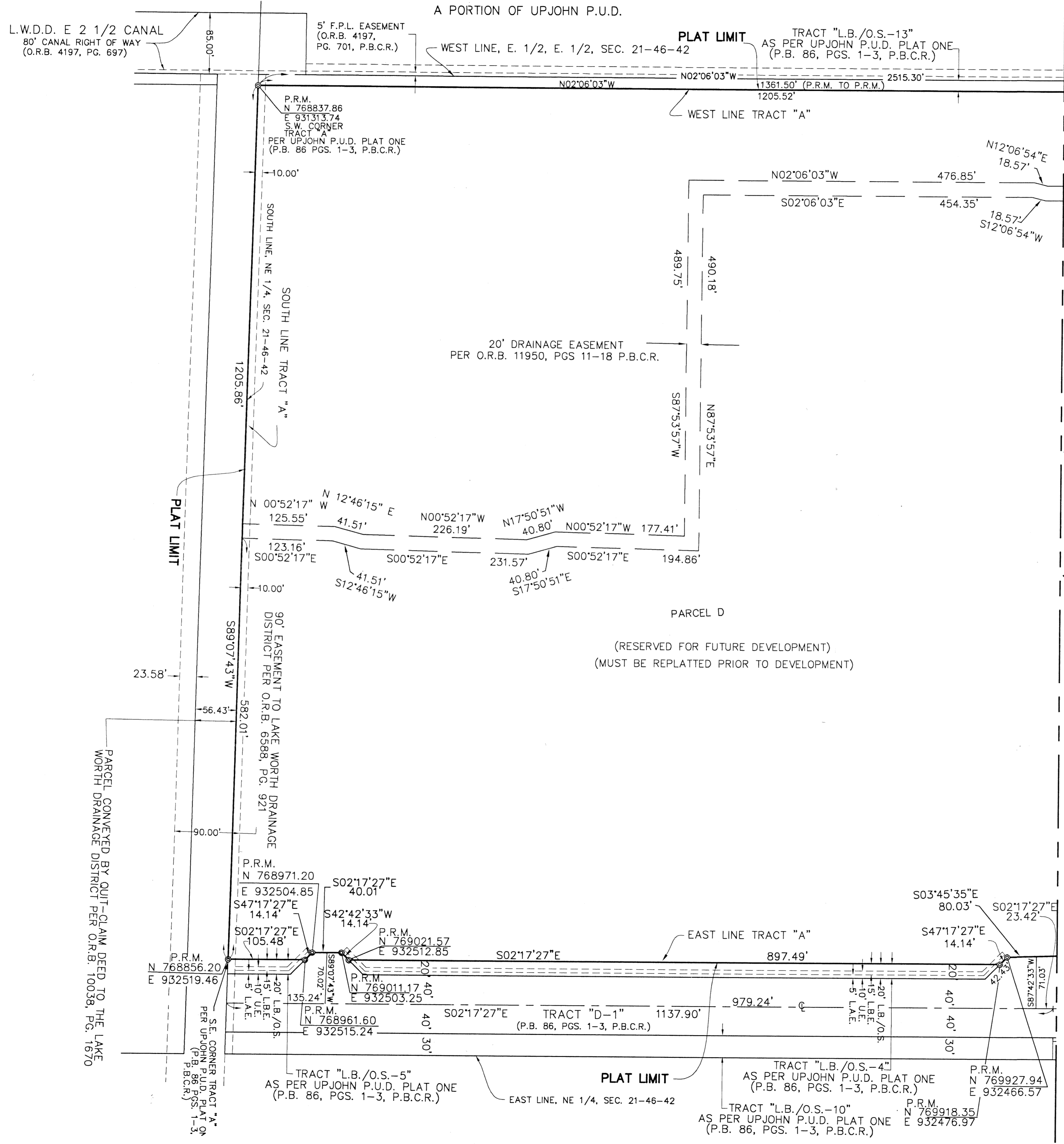


MIZNER VILLAGE

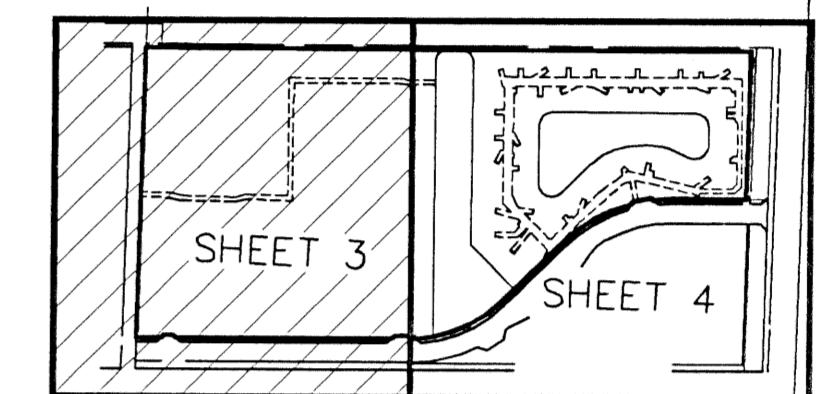
A REPLAT OF ALL OF TRACT "A", UPJOHN P.U.D. PLAT ONE, ACCORDING TO THE PLAT THEREOF RECORDED IN PLAT BOOK 86, PAGES 1-3, OF THE PUBLIC RECORDS OF PALM BEACH COUNTY, FLORIDA, LYING IN SECTION 21, TOWNSHIP 46 SOUTH, RANGE 42 EAST, PALM BEACH COUNTY, FLORIDA.
A PORTION OF UPJOHN P.U.D.

- LEGEND:
 P.O.C. = POINT OF COMMENCEMENT
 P.O.B. = POINT OF BEGINNING
 P.B. = PLAT BOOK
 PGS. = PAGES
 O.R.B. = OFFICIAL RECORDS BOOK
 P.B.C.R. = PALM BEACH COUNTY RECORDS
 C = CENTER LINE
 R = RADIUS
 Δ = CENTRAL ANGLE
 L = ARC LENGTH
 L.W.D.D. = LAKE WORTH DRAINAGE DISTRICT
 R.P.B. = ROAD PLAT BOOK
 U.E. = UTILITY EASEMENT
 L.A.E. = LIMITED ACCESS EASEMENT
 L.B.E. = LANDSCAPE BUFFER EASEMENT
 L.B./O.S. = LANDSCAPE BUFFER/OPEN SPACE
 ⊙ = PERMANENT REFERENCE MONUMENT
 L.M.E. = LAKE MAINTENANCE EASEMENT
 RAD PT. = RADIUS POINT

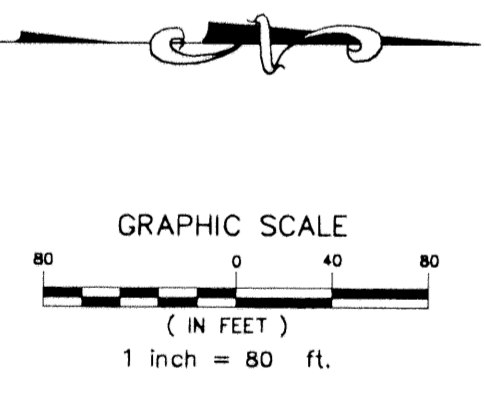
COUNTY OF PALM BEACH
 STATE OF FLORIDA
 THIS PLAT WAS FILED FOR RECORD
 AT _____ M. THIS _____ DAY
 OF _____ AND DULY
 RECORDED IN PLAT BOOK NO. _____
 ON PAGE _____
 DOROTHY H. WILKEN,
 Clerk Circuit Court
 BY: _____ D.C.



MATCH LINE (SEE SHEET 4 OF 4)



SHEET INDEX
 NOT TO SCALE



AREA TABULATION		
PARCEL A	694,038 SQUARE FEET	15.933 ACRES
PARCEL B	143,173 SQUARE FEET	3.287 ACRES
PARCEL C	214,049 SQUARE FEET	4.914 ACRES
PARCEL D	1,464,662 SQUARE FEET	33.624 ACRES
TOTAL	2,515,922 SQUARE FEET	57.758 ACRES

SUBDIVISION MIZNER VILLAGE PUD
 PLAT BOOK 89
 PLAT 172
 ZONING MAP # 215A
 ZONING PUD
 ZIP CODE 33440
 SP. TAZ 408
 PUD NAME UPJOHN PUD

PARCEL CONVEYED BY QUIT-CLAIM DEED TO THE LAKE WORTH DRAINAGE DISTRICT PER O.R.B. 10038, PG. 1670

MILLER LEGG & ASSOCIATES, INC.
 Main Office:
 1800 N. Douglas Road, Suite 200
 Pembroke Pines, Florida 33028-3300
 (954) 436-7000 Fax: (954) 436-8864
 Palm Beach Regional Office:
 1300 Corporate Center Way, Suite 201
 Wellington, Florida 33411-6550
 (888) 768-8861 Fax: (888) 768-8861
 Orlando Office:
 8000 + Shores • Landscape Architects 27 North Orange Avenue, Suite 505
 Environmental Professionals Orlando, Florida 32801
 (407) 928-4122 Fax: (407) 928-4123
 www.millerlegg.com